

TOS KURIM | FSS – 80 CNC | 1989 | HEIDENHAIN TNC 355

BED MILLING



MODEL

FSS – 80 CNC

YEAR

1989

CONTROLLER

HEIDENHAIN TNC 355

The above Info is to the best of our Knowledge, but it's not binding in detail.

TECHNICAL DATA

ITEM \ MODEL	TOS KURIM BED MILLING
Table	3000x800 mm
Stroke	X = 3000 mm, Y = 800 mm & Z = 800 mm
Spindle Rpm	2500 RPM
Controller	Heidenhain TNC-355, upgraded to TNC-426(1996)
Head with Quill.	X - Travel = 3000 mm Y - Travel = 800 mm
Max. workpiece weight	2500 kg
Spindle	ISO 50
Vertical movement of Horizontal spindle Z-A	850 mm
Vertical movement of Vertical spindle Z-B	1000 mm
Distance between the Horizontal spindle centre and table surface with output cross slide	250 – 1100 mm
Distance between the Horizontal spindle centre and table surface with input cross slide	100 – 1100 mm

The above Info is to the best of our Knowledge, but it's not binding in detail.

TECHNICAL DATA

Distance between the vertical spindle nose and the table surface	50 – 840 mm
Distance between the Horizontal spindle nose and table sets edge	80 – 720 mm
Distance between the vertical spindle nose and table sets edge	140 – 660 mm
Vertical spindle Quill movement	50mm
Vertical spindle head turn able	90 degree
Spindle Drive motor	13.5 kw
Spindle speed	2000 rev\min
Total power	40 kva
Total length	5660 mm
Overall width	3500 mm
Total Height	3000 mm
Total net weight	17500 kg

The above Info is to the best of our Knowledge, but it's not binding in detail.

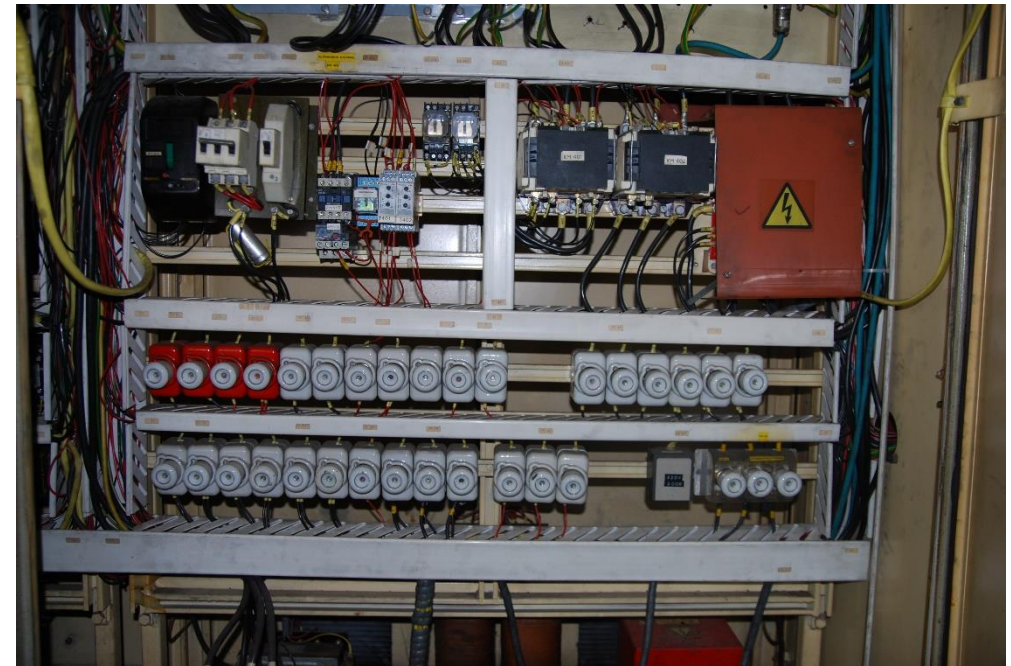
MACHINE PHOTOS



The above Info is to the best of our Knowledge, but it's not binding in detail.



The above Info is to the best of our Knowledge, but it's not binding in detail.



The above Info is to the best of our Knowledge, but it's not binding in detail.