

## DUGARD | MINI MILL - 450 | 2008 | SEIMENS 802 D

### VERTICAL MILLING MACHINE



*MODEL*

*Mini Mill - 450*

*YEAR*

*2008*

*CONTROLLER*

*Seimens 802 D*

The above Info is to the best of our Knowledge, but it's not binding in detail.

**TECHNICAL DATA**

<b>TABLE</b>	
Table Size	<b>700 x 320 mm</b>
T – Slot (no. x wid x dis)	<b>3 x 14 mm x 100 mm</b>
Table Load	<b>150 kg</b>
<b>TRAVEL</b>	
X Travel	<b>450 mm</b>
Y Travel	<b>350 mm</b>
Z Travel	<b>380 mm</b>
<b>SPINDLE</b>	
Spindle Nose to Table	<b>135 ~515 mm</b>
Spindle Centre to Column	<b>430 mm</b>
Spindle Taper	<b># 40</b>
Spindle Speed	<b>80 ~ 8000 rpm (opt. 10000rpm)</b>
<b>FEED RATE</b>	
Rapid on (X / Y / Z) Axes	<b>36 / 36 / 36 m / min</b>
Cutting Feed rate	<b>1 ~ 10000 mm / min</b>
<b>ACCURACY</b>	
Positioning	<b><math>\pm 0.005</math> mm</b>
Repeatability	<b><math>\pm 0.003</math> mm</b>

The above Info is to the best of our Knowledge, but it's not binding in detail.

**TECHNICAL DATA**

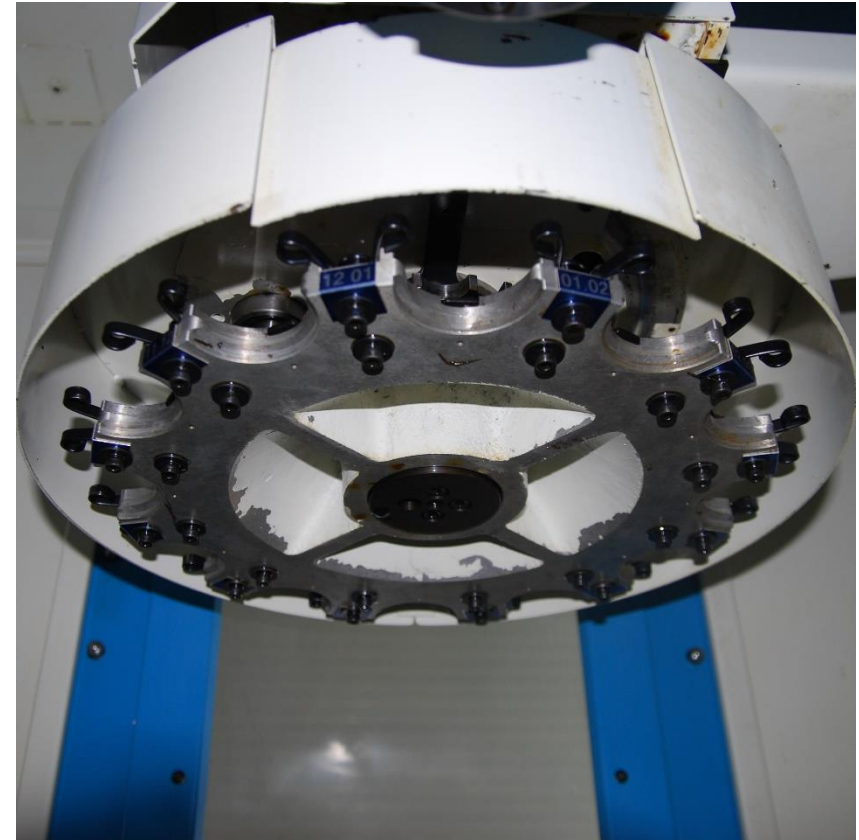
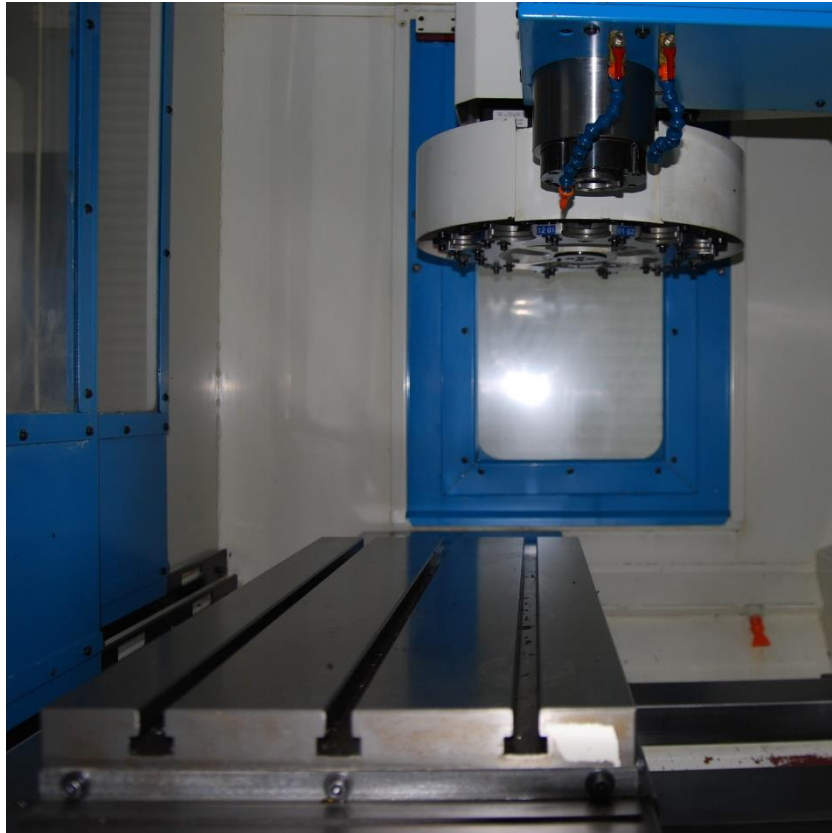
<b>TOOL CHANGER</b>	
<b>Tool Capacity</b>	<b>12</b>
<b>Tool Shank</b>	<b>BT 40 or CT 40</b>
<b>Tool Change Time</b>	<b>T – T: 6sec, C – C: 10sec</b>
<b>Magazine type</b>	<b>Carousel</b>
<b>Pull Stud</b>	<b>JMBTA Standard 45 degree</b>
<b>Max. Tool Diameter with Neighbour Tool</b>	<b>100 mm</b>
<b>Max. Tool Weight</b>	<b>5 kg</b>
<b>MOTOR</b>	
<b>Spindle Motor Digital</b>	<b>FANUC: 5.5 kW / SIEMENS: 8.5 kW (S6 – 60%)</b>
<b>Drive Motor X, Y, Z Digital</b>	<b>X, Y:0.9 kW, Z: 1.4 kW</b>
<b>Coolant Pump</b>	<b>0.38 kW</b>
<b>GENERAL</b>	
<b>Power Required</b>	<b>10 KVA</b>
<b>Air Required</b>	<b>5 kg/cm<sup>2</sup>, 200L/min</b>
<b>Floor Space (L x W x H)</b>	<b>2315 x 1550 x 2200 mm</b>
<b>Machine Weight (approx..)</b>	<b>2200 kg</b>

The above Info is to the best of our Knowledge, but it's not binding in detail.

## MACHINE PHOTOS

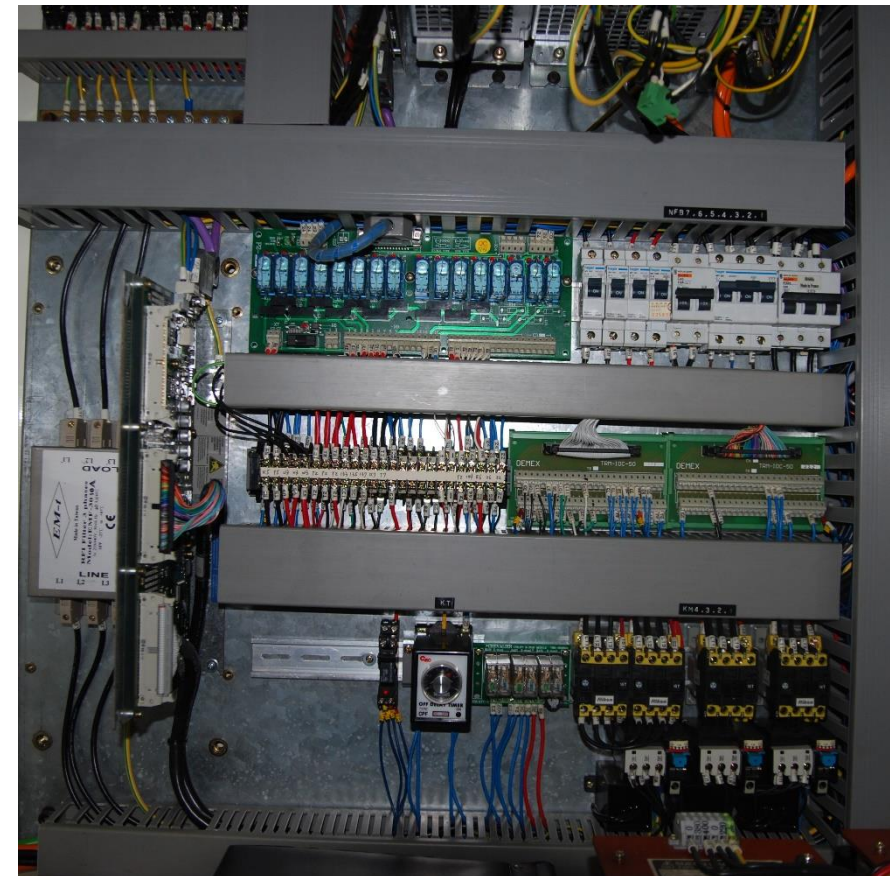


The above Info is to the best of our Knowledge, but it's not binding in detail.



The above Info is to the best of our Knowledge, but it's not binding in detail.





The above Info is to the best of our Knowledge, but it's not binding in detail.