

MORISIEKI | ZL 15 | 1990 | FANUC O - TTC

TURN MILL CENTRE



MODEL

ZL 15 - 4 Axles

YEAR

1990

CONTROLLER

FANUC O - TTC

The above Info is to the best of our Knowledge, but it's not binding in detail.

TECHNICAL DATA

ITEM \ MODEL

MORISEIKI ZL – 15 / 4 - Axles

Capability & Capacity

Swing Over bed	480 mm
Swing over cross Slide	370 mm
Max. Machining Diameter	160 mm
Standard Machining Diameter	40 mm
Max. Machining Length	100 mm
Travel X – Axis	135 (472) mm (IPM)
Travel Z – Axis	560 (590) mm (IPM)

Main Spindle

Main Spindle	10 / 7.5 HP
Spindle Speed Range	50 – 5000 RPM
Spindle Nose	JIS A – 5
Spindle Bore	52 mm
No. of Spindle Speed Range	1

Sub - Spindle

Sub Spindle	7.5 / 5 HP
Spindle Speed Range	50 – 5000 RPM
Spindle Bore	35 mm
X -Axis Travel	195 mm
Z -Axis Travel	390 mm
Turret	12 Tools
Sub - Turret	6 Tools

1. Collet Chuck Diameter– 2.5 – 45 mm.

2. There is about 15 Tool Holders

3. Bar Feeder – Fedec DH65L with bar Diameter – 6 – 65 mm, L – 1500mm

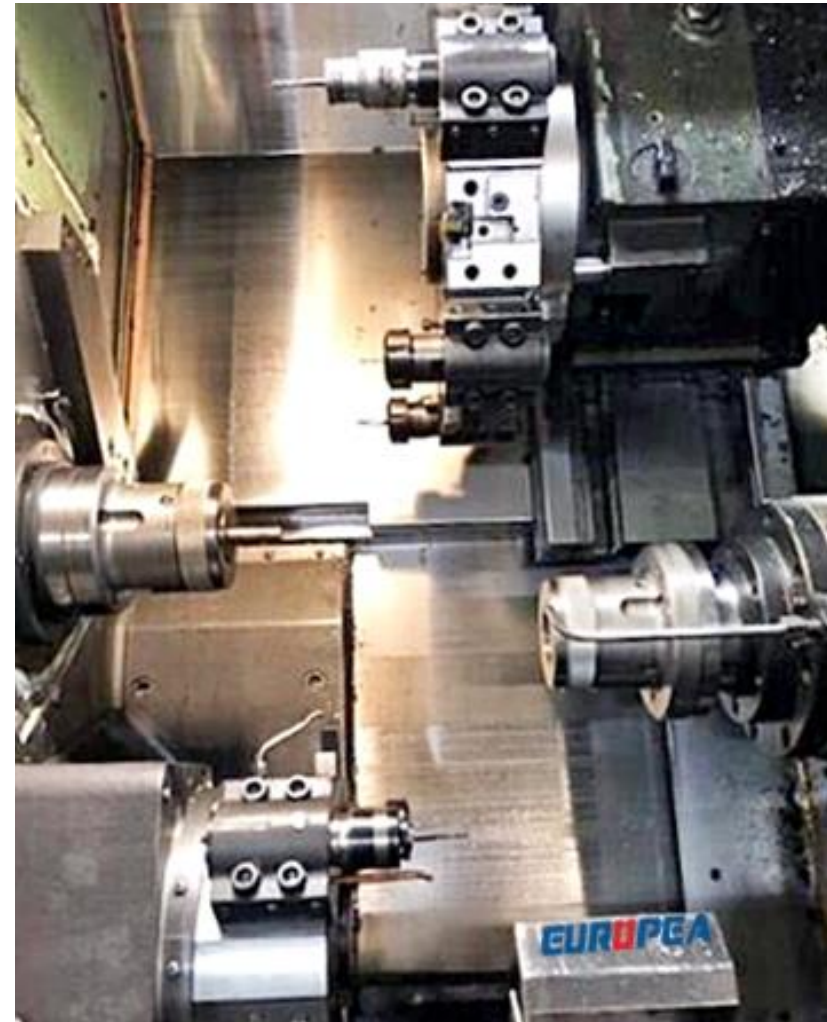
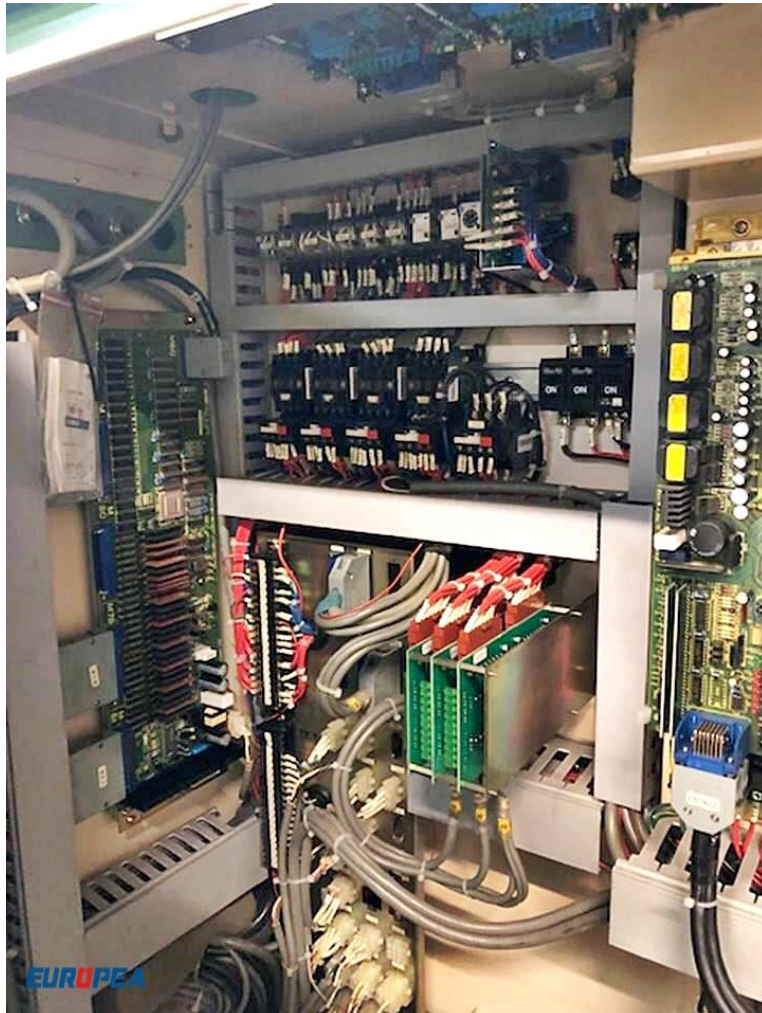
The above Info is to the best of our Knowledge, but it's not binding in detail.

MACHINE PHOTOS



The above Info is to the best of our Knowledge, but it's not binding in detail.

(DEALING WITH USED IMPORTED MACHINE)



The above Info is to the best of our Knowledge, but it's not binding in detail.



The above Info is to the best of our Knowledge, but it's not binding in detail.