

QUICKTECH | ST2 – 250 | 2006 | MITSUBISHI

10" TURNING CENTRE



MODEL

ST2 – 250

YEAR

2006

CONTROLLER

MITSUBISHI

The above Info is to the best of our Knowledge, but it's not binding in detail.

TECHNICAL DATA

<i>Spindle Capacity</i>	<i>Machine Type</i>	<i>ST2 - 250</i>
	Swing over bed	500.0mm
	Swing over cross slide	220.0mm
	Max. Cutting Diameter	200.0mm
	Slant bed degree	30 degree
	X – Axis travel	215.0mm
	Z – Axis travel	520.0mm
<i>Spindle</i>	Spindle Nose	ISO (DIN) A2-6
	Through hole diameter	75.0mm
	Spindle Speed	4000 rpm
	Spindle motor	Mitsubishi Servo 7.5 kw
	Hydraulic chuck Size	10”
	Hydraulic pressure – Mix\Max	50\30 kgf\cm ²
<i>Turret</i>	Turret type	Servo Turret
	Tool number	12 Tools
	Boring bar dia.	32.0mm
	Square Tool holder	20 x 20 mm
<i>Axis</i>	X axis ball screw	Dia. 32 x P 10
	X axis Linear guide way	30.0mm
	X axis Rapid feed	20M\min
	Z axis ball screw	Dia. 32 x P 10
	Z axis Linear guide way	30.0mm
	Z axis Rapid feed	20M\min

The above Info is to the best of our Knowledge, but it's not binding in detail.

TECHNICAL DATA

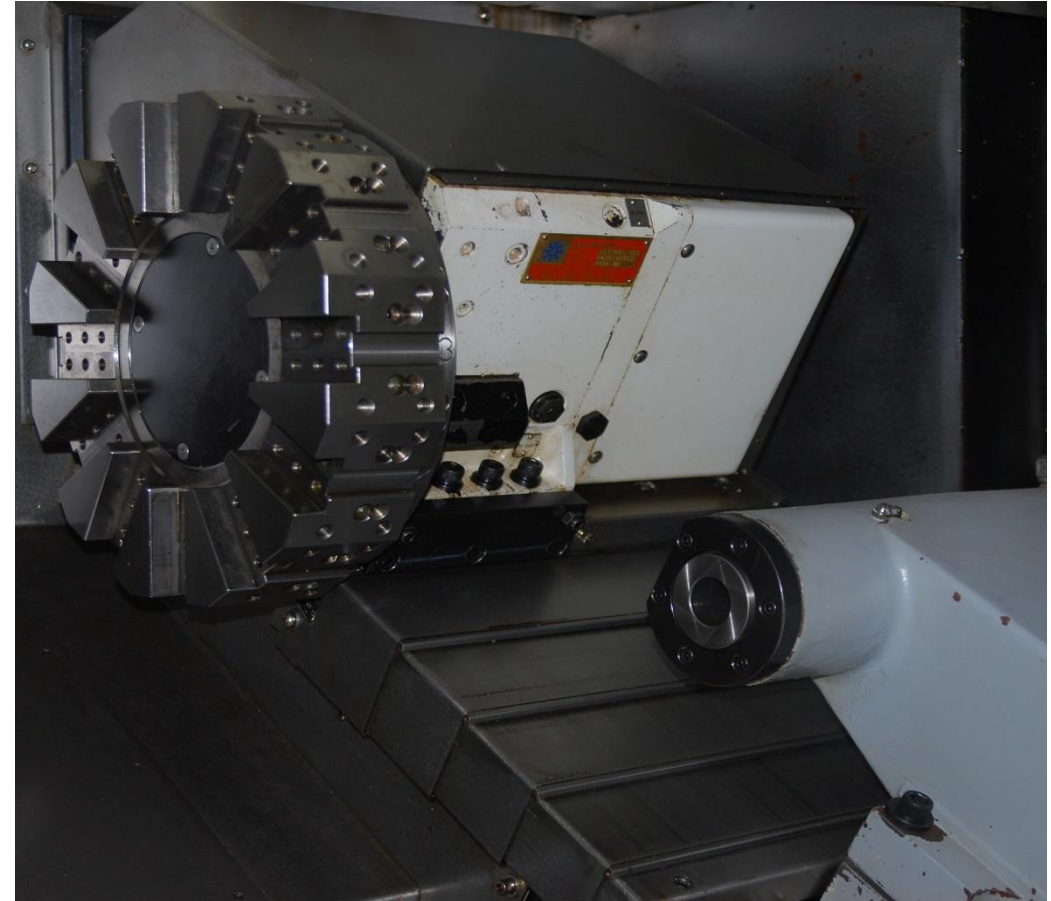
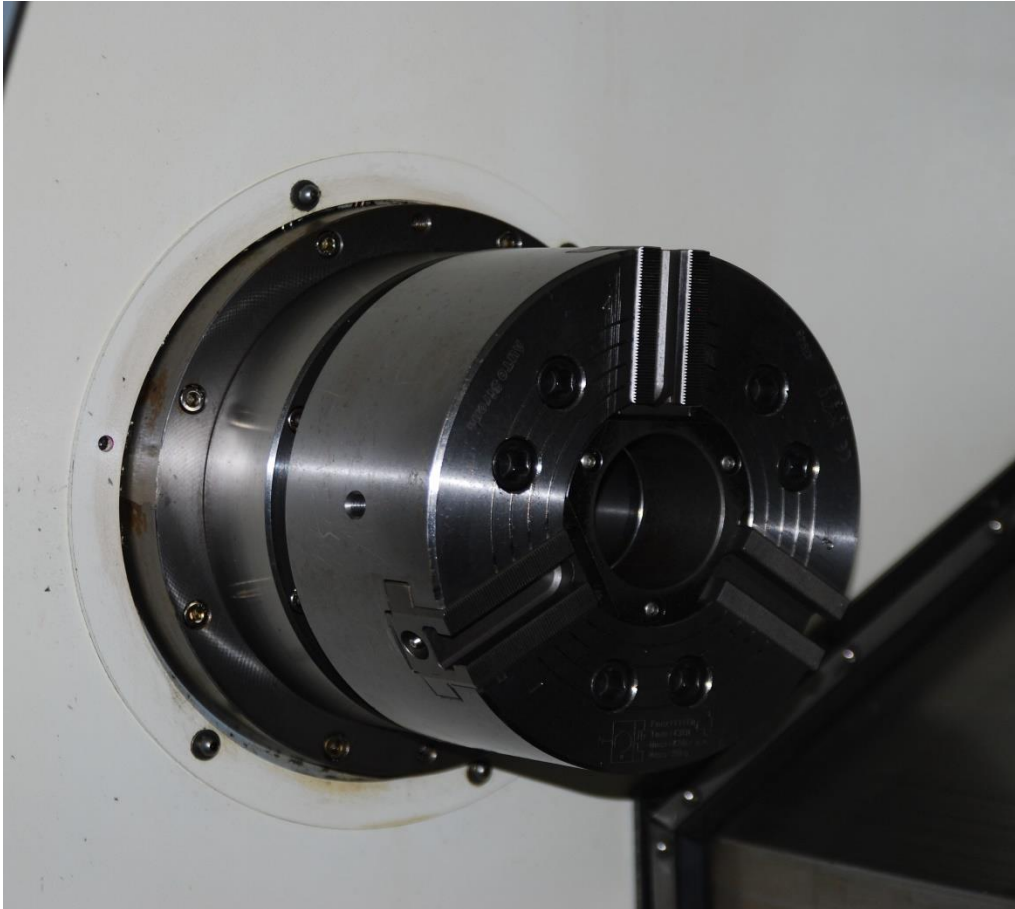
Motor	X axis servo motor	Mitsubishi AC servo 1.0 Kw (B)
	Z axis servo motor	Mitsubishi AC servo 1.5 Kw
	Coolant Pump motor	2\3 hp
	Chip Conveyor	1\4 hp
	Hydraulic pump Motor	1 hp
Accuracy	Positioning accuracy	0.005 mm
	Repeatability	0.005 mm
Tailstock	Tailstock quill dia.	65.0 mm
	Tailstock travel	425.0 mm
	Quill taper	MT4
	Quill Travel	50.0 mm
Coolant System	Tank Capacity	140 L
	Max. Coolant pressure	2.3 ksg
	Max. Coolant flow	67 L\min
Lubrication System	Tank Capacity	2 L
	Pump Pressure	15 kgf\ cm2
	Pump Flow rate	2.2 L\min
Machine Size	Length Without Chip Conveyor	2340 mm
	Length with Chip Conveyor	3140 mm
	Machine Width	1594 mm
	Machine Height	1700 mm
	Machine weight	37500 Kg

The above Info is to the best of our Knowledge, but it's not binding in detail.

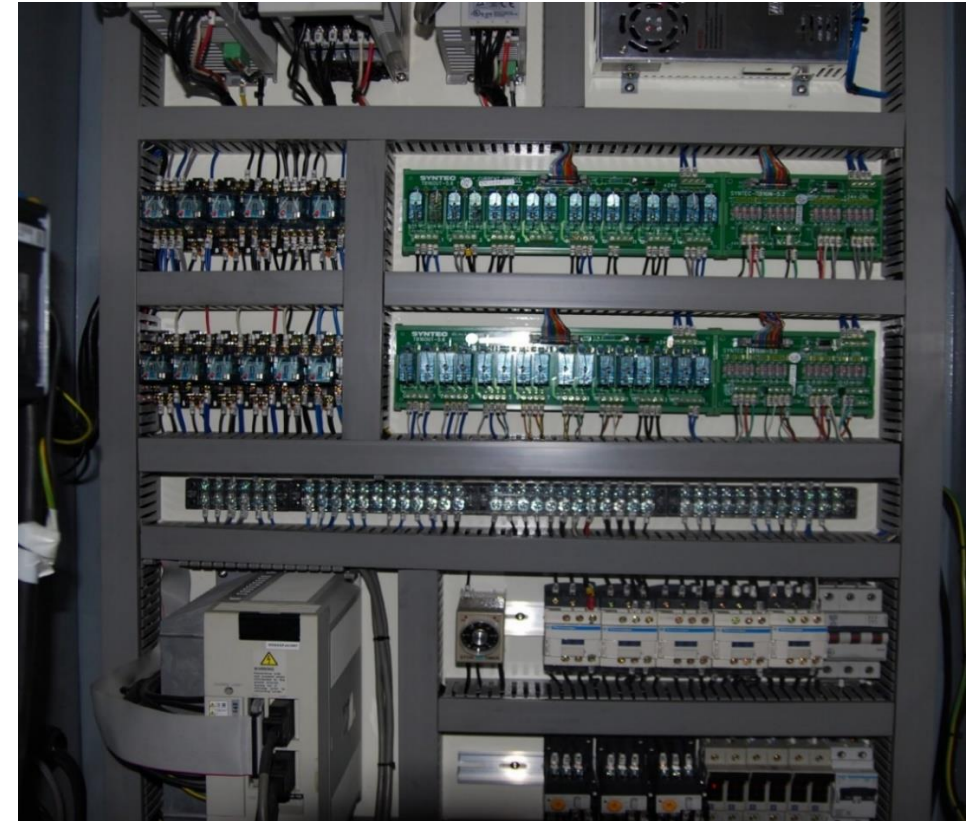
MACHINE PHOTOS



The above Info is to the best of our Knowledge, but it's not binding in detail.



The above Info is to the best of our Knowledge, but it's not binding in detail.



The above Info is to the best of our Knowledge, but it's not binding in detail.